

2024

Information Pack for Lead School Applications



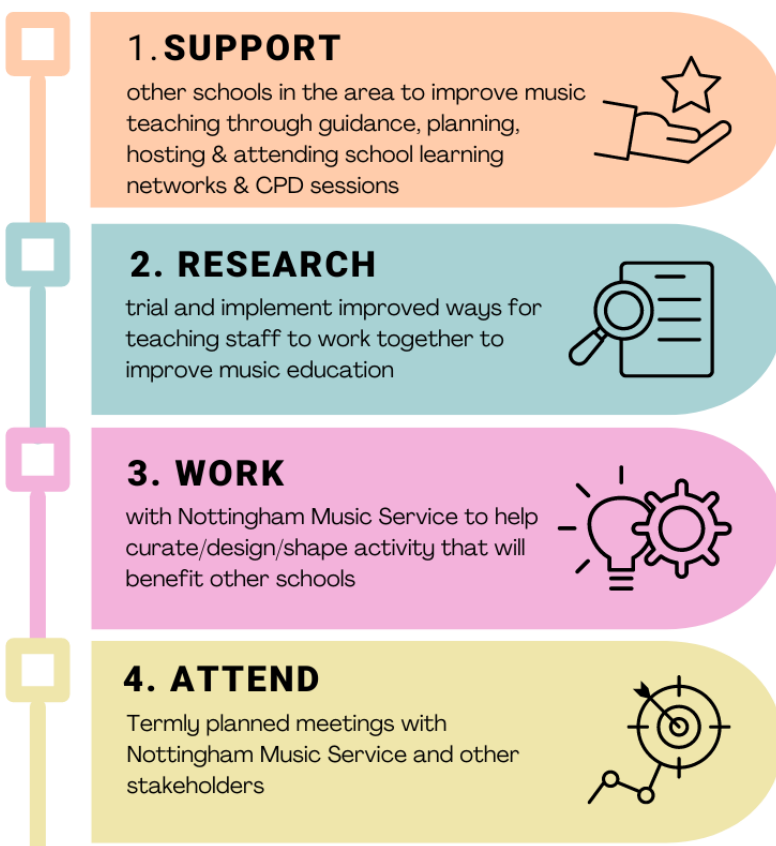
Michael Aspinall
Nottingham Music Service
4/26/2024

INTRODUCTION

As outlined in the new National Plan for Music Education (NPME), from September 2024, **Lead Schools** must be appointed in each Local Authority area. The appointed schools (one secondary and one primary) will be **co-deliverers with the local Music Service to support stronger links between schools and academy trusts**, and broker opportunities for peer-to-peer learning in music education.

Lead Schools should be able to demonstrate how they exemplify high-quality music provision and teaching, champion best practice in their area, and show commitment to several key aspects including curriculum delivery with significant timetable time, co-curricular opportunities, inclusive provision, and teacher development. These expectations are aligned with the Nottingham Music Service Progression Framework KS1-2 and our School Music Plan Template (available [here](#)).

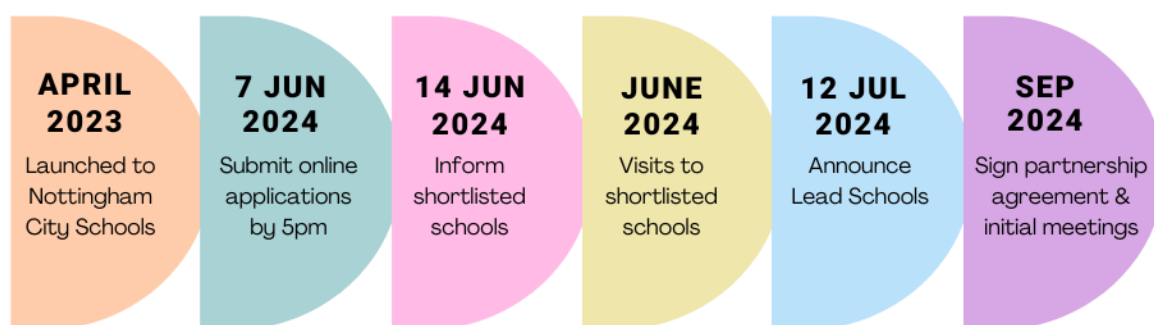
LEAD SCHOOLS WILL:



BENEFITS OF BEING A LEAD SCHOOL:



TIMELINE FOR THE APPOINTMENT OF PRIMARY AND SECONDARY LEAD SCHOOLS:



Further meet-ups will be agreed to before the end of term, with CPD offerings (TBC)



APPLICATION INFORMATION

- The official application form is in a digital format and can be accessed [here](#).
- Please submit only one application per school. Academies and schools within multi-academy trusts will each be treated as separate schools.
- Nottingham Music Service recognises that all schools have strengths and relative areas for development. In applying, please consider the areas which are exemplary in your school
- We strongly advise that the application is filled in by the School Music Lead, in collaboration with the leadership team and associated governor responsible for evaluating and monitoring the effectiveness of music provision.
- Please submit the online application by 5pm, Friday 7th June 2024.

SHORTLIST STAGE:

Those schools selected from the first stage will be the shortlisted schools and will be assessed for the final selection of Lead Schools. The school may receive one or more visits from Nottingham Music Service Senior Leadership Team. On the visit, the Music Service staff members will undertake a number of activities which *may* include:

- Detailed discussion regarding the Schools Music Education Plan
- Discussions with Staff
- Discussions with the School Music Lead
- Observation of music teaching within the school
- Discussion of the schools Music Lead application

Nottingham Music Service will then inform the two successful Lead Schools by 12th June, based on the evidence gathered during the shortlist stage.

TERMS AND CONDITIONS OF THE LEAD SCHOOL/SETTING STATUS:

It is important that Lead Schools continue to exemplify excellence in music education beyond the acceptance of Lead School status.

As partners with Nottingham Music Service the Lead Schools will continue to bring school-based expertise and experience of school-to-school support to city wide music teaching partnership discussions and strategies. By doing so, they will support Nottingham Music Service to respond to the present challenges and opportunities within local schools and work in partnership to adapt their offers and ways of working to achieve maximum impact in these settings.

Lead Schools/Settings will contribute to the development of a strategic approach to inclusion in all aspects of our work.

THE STATUS OF LEAD SCHOOL WILL BE:

- Initially for 1 year
- Evaluated after 1 year then on a rolling annual basis
- Re-assessed every 5 years or sooner if the Lead Person leaves the school or setting

