

Viola

Aida Trial Scene

Verdi arr. IB, MA and TL

Andante mosso ♩ = 86

1 *ff*

6 *div.* with vox *p*

13 **A** 4 **B** free time 1 a tempo 6 **C** Allegro ♩ = 120 *f*

26 *p* *ff* 4

35 **D** free time 1 3 a tempo 3 **E** Allegro ♩ = 120 *ff*

43 *p* *ff*

48 free time 4 1

53 a tempo 6

59 **F** Allegro ♩ = 120 **G**

f *p* *ff*

65

70 **H** Piu Vivo ♩ = 100 *string.....*

p *ff*

76 **I** Andante mosso ♩ = 80

ff

83

p

87 **J** With vox ♩ = 90 poco acceler

ff *pp*

92 **K** Faster ♩ = 100

ff *ff*

98 **L** Andante - with vox ♩ = 90 poco accelerando Faster ♩ = 110

ff *pp*

103

ff *ff*

109 **M** sost.....
ff

115 **N** Faster $\text{♩} = 136$
f

120

125

127
p

ando **O** div.
129 *pp*

131

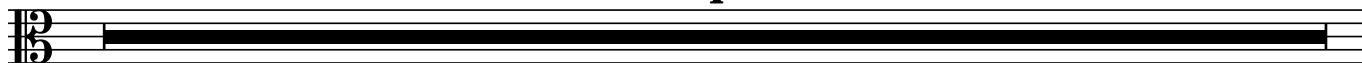
133

135

P

137 *Colla voce*

4



141 *f* *with vox* **Q** *Faster* ♩ = 156

146 *Furious* *ff*

150

155