

Crash Cymbal, Tam-tam, Suspended Cymbal & Marching Bass Drum

Aida Trial Scene

Verdi arr. IB, MA and TL

Andante mosso ♩ = 86

B. Dr. With offstage group until fig F

11 $\frac{4}{4}$ 5 *f* 4

14 **A** 4 **B** free time 1 $\frac{8}{4}$ $\frac{4}{4}$

19 a tempo 3 solo *pp* 1 **C** Allegro ♩ = 120 4 *f*

30 4 $\frac{8}{4}$

35 **D** free time 1 4/4 3 solo *pp* 1

42 **E** Allegro ♩ = 120 4 *f* 4 free time 1 $\frac{8}{4}$ $\frac{4}{4}$

53 a tempo 3 solo *pp* return to main orchestra To Tam. 1

59 **F** Allegro ♩ = 120 5 **G** 10

2 **H** Piu Vivo $\text{♩} = 100$ Crash Cymbal, Tam-tam, Suspended Cymbal & Marching Bass Drum
string.....

74 Tam. **7**

I 82 Andante mosso $\text{♩} = 80$ **1** To Cr. Cym. **4**

ff *mp*

J 89 With vox $\text{♩} = 90$ **2** **K** Faster $\text{♩} = 100$ poco accelerando **4** **2/4**

96 **2/4** **3** **e**

99 **L** Andante - with vox $\text{♩} = 90$ **2** Faster $\text{♩} = 110$ poco accelerando **4** **2/4**

106 **2/4** **3** **e**

109 **M** sost..... **8**

N 117 Faster $\text{♩} = 136$ **5** Cr. Cym.

124 **5**

O 129 **8**

P

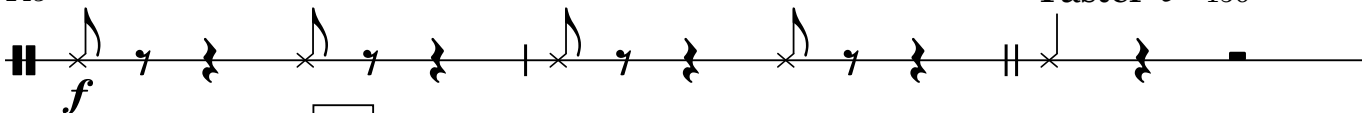
137 *Colla voce*

6



143 *with vox*

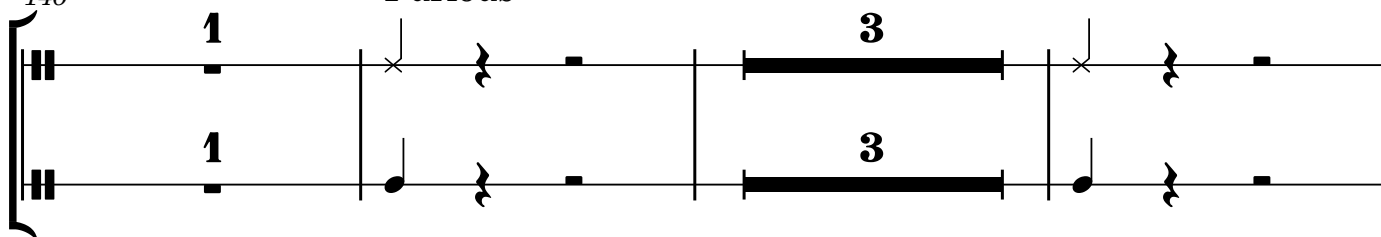
Faster ♩ = 156



Q

146

Furious



152

