

Timpani-Bass Drum

Ibiza Medley

Inspired by the Heritage Orchestra

transcr. Helen Maddison

Hey Girl, Hey Boy - Chemical Brothers
♩ = 120

4

f

Musical notation for measures 4-7 of 'Hey Girl, Hey Boy'. The piece is in 4/4 time. Measure 4 is a whole rest. Measures 5-7 feature a rhythmic pattern of quarter notes and eighth notes with rests, starting with a forte (*f*) dynamic.

8

Musical notation for measures 8-11 of 'Hey Girl, Hey Boy', continuing the rhythmic pattern from the previous section.

12

1

Musical notation for measures 12-15 of 'Hey Girl, Hey Boy'. Measure 12 is the start of a first ending, marked with a box containing the number '1'. Measures 13-15 continue the rhythmic pattern.

16

Musical notation for measures 16-20 of 'Hey Girl, Hey Boy', continuing the rhythmic pattern.

Right Here, Right Now - Fat Boy Slim

21 2 ♩ = 120

21

Musical notation for measures 21-28 of 'Right Here, Right Now'. The piece is in 4/4 time. Measures 21-28 consist of a steady bass drum pattern of quarter notes.

29

Musical notation for measures 29-36 of 'Right Here, Right Now'. The piece is in 4/4 time. Measures 29-36 consist of a steady bass drum pattern of quarter notes. A *cresc* (crescendo) marking is placed below the staff, and a *tr* (trill) marking is placed above the staff at the end of measure 36.

37

(tr) 3

4

Musical notation for measures 37-40 of 'Right Here, Right Now'. Measure 37 is a whole rest, marked with a box containing the number '3' and '(tr)'. Measures 38-40 are a whole rest, marked with a box containing the number '4'.

Timpani-Bass Drum

Timpani-Bass Drum

41

tr *ff*

48

53

cresc

58

Unfinished Sympathy (Massive Attack)

63 4 ♩ = 110

8 5 4 12 4

91 6 Possible cut 91 to 107

16 7 5

Insomnia - F

113 8 ♩ = 124

7 4 5

9

129 Bass drum

134

10 8

11

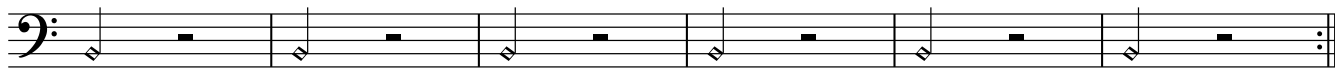
12

13

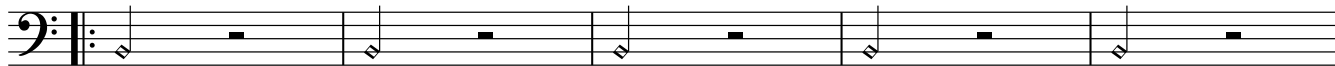
145

7 8 Bass drum

162

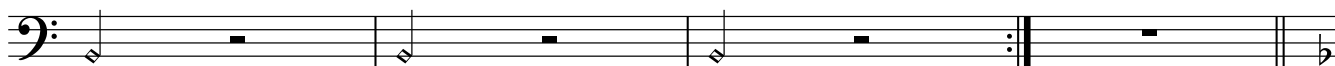


168 **14**



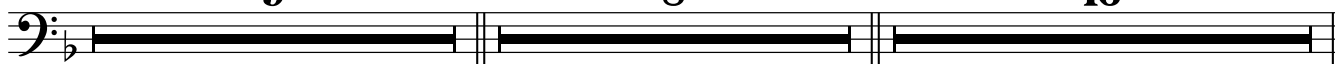
173

(possible multiple repeats)



You Got The Love

177 **15** ♩ = 108



210 **17**

repeat x lots **18**

