

Baritone 1 BRONZE

# Carmina Burana

ABRSM accredited 2015 mainly BRONZE

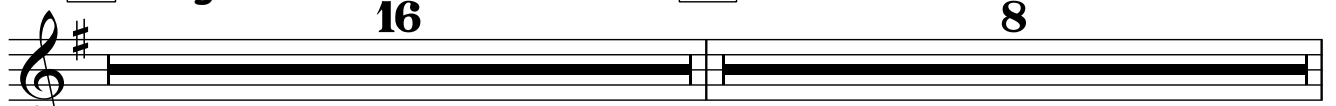
Carl Orff

Very Slow



**1** *ff*  
Allegro

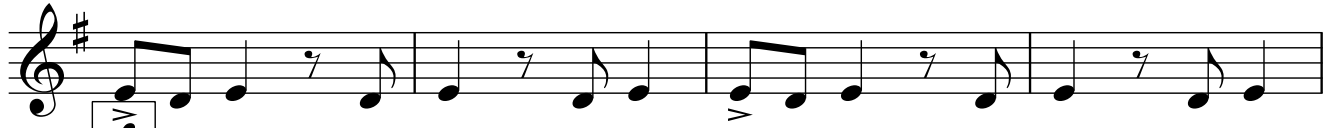
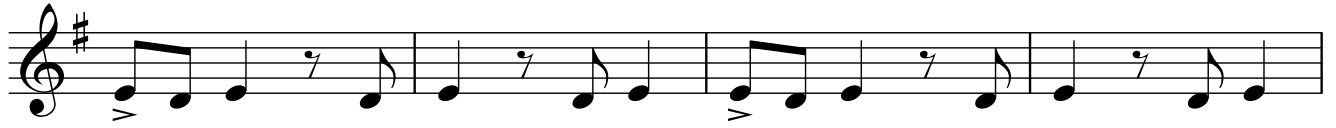
**2**



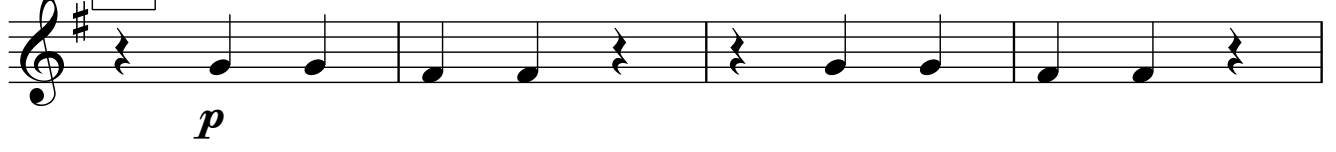
**3**



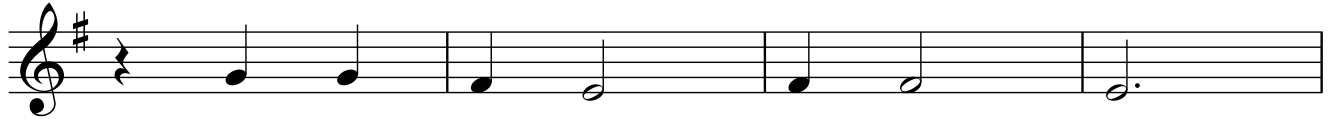
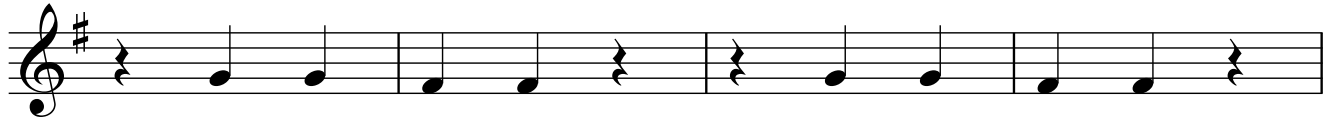
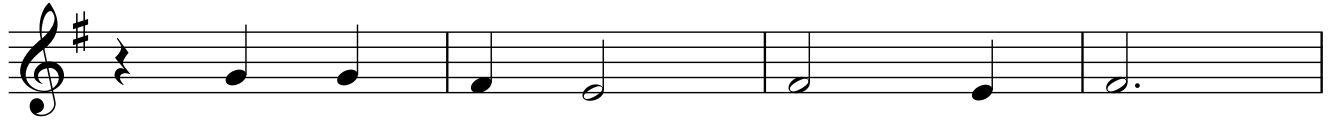
*pp*



**4**



*p*



Baritone 1 BRONZE

5

Musical notation for exercise 5, measures 1-4. The key signature is one sharp (F#). The first measure starts with a forte (*f*) dynamic. The notes are: G4 (quarter), A4 (quarter), B4 (quarter), C5 (quarter), B4 (quarter), A4 (quarter), G4 (quarter), F#4 (quarter). There are slurs under the first four notes and the last four notes. There are also accents under the notes in measures 2 and 4.

6

Musical notation for exercise 6, measures 1-4. The key signature is one sharp (F#). The first measure starts with a fortissimo (*ff*) dynamic. The notes are: G4 (quarter), A4 (quarter), B4 (quarter), C5 (quarter), B4 (quarter), A4 (quarter), G4 (quarter), F#4 (quarter). There are slurs under the first four notes and the last four notes. There are also accents under the notes in measures 1, 2, 3, and 4.

7

Musical notation for exercise 7, measures 1-4. The key signature is one sharp (F#). The notes are: G4 (quarter), A4 (quarter), B4 (quarter), C5 (quarter), B4 (quarter), A4 (quarter), G4 (quarter), F#4 (quarter). There are slurs under the first four notes and the last four notes. There are also accents under the notes in measures 1, 2, 3, and 4. A *cresc* marking is present under the notes in measure 4.

8

Musical notation for exercise 8, measures 1-4. The key signature is one sharp (F#). The first measure starts with a fortissimo (*fff*) dynamic. The notes are: G4 (quarter), A4 (quarter), B4 (quarter), C5 (quarter), B4 (quarter), A4 (quarter), G4 (quarter), F#4 (quarter). There are slurs under the first four notes and the last four notes. There are also accents under the notes in measures 1, 2, 3, and 4. The exercise ends with a double bar line.